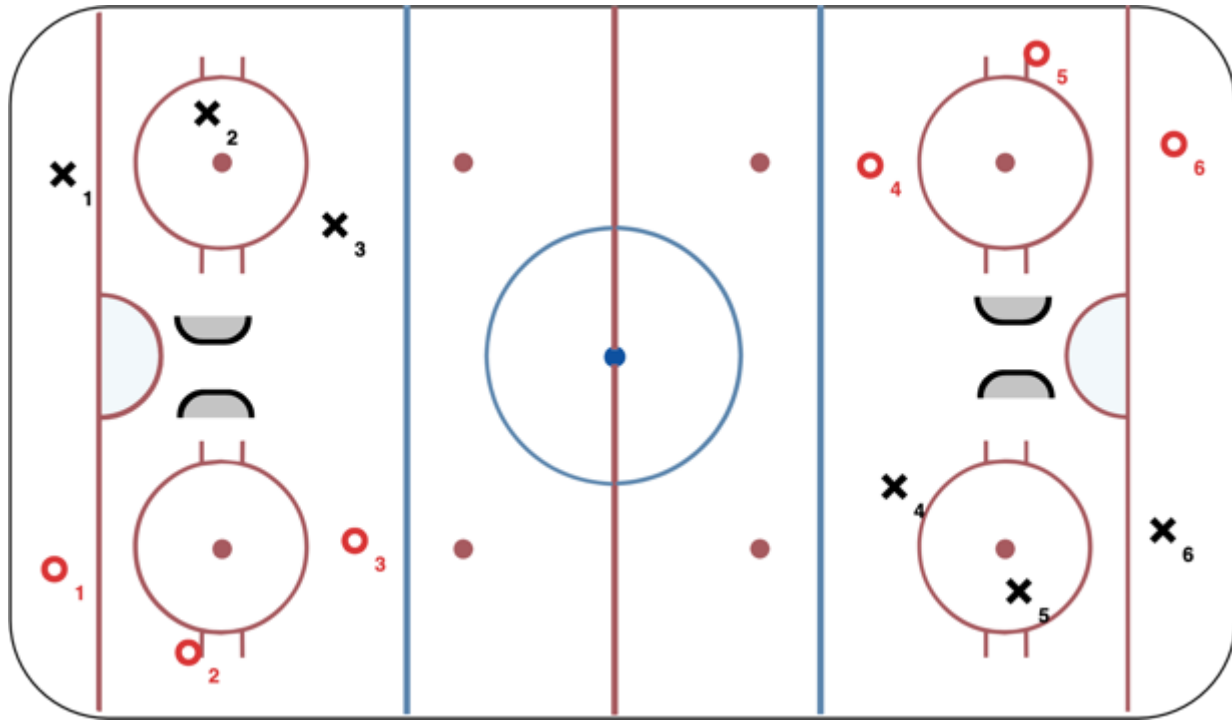


Reverse Nets 3on3



Description

Nets are placed back to back in the center of the zones. Players are broken into teams for games of 3on3.

Putting the nets this way forces players to the perimeter often creating opportunities for players to angle. Additionally, the middle of the ice is even more important due to proximity and location of both nets, therefore not only is board angling occurring, but also important to angle in open ice away from danger areas.