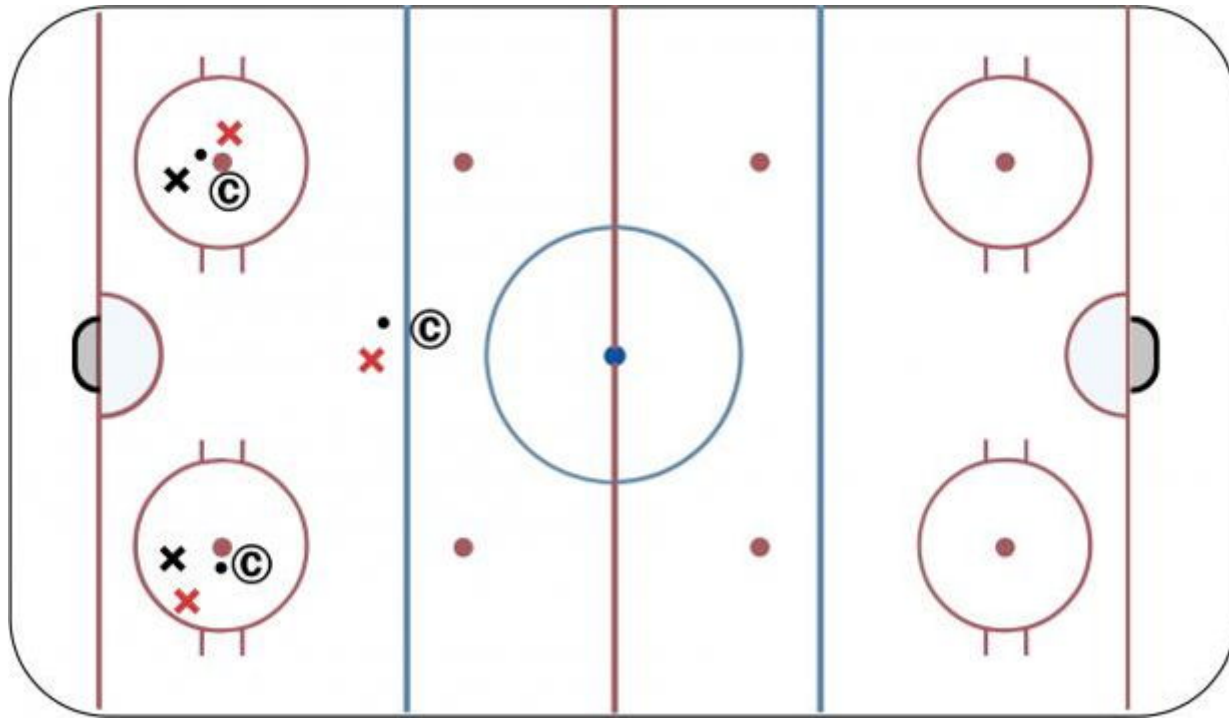


1 on 1 to 2 on 2 to 3 on 2



Description

Drill starts at one of the face-off dots when the coach chips a puck into the corner and the first two players battle 1-on-1 on the whistle. Red player is forward and tries to take the puck to the net after beating D. Black player is defence and tries to stop forward and clear the puck. On 2nd whistle, the first puck is now dead and the coach at the opposite face-off dot chips a puck into the corner and his two players now battle with the original two players joining them, making it a 2-on-2. On the 3rd whistle, the 2nd puck is now dead and the coach at the blue line passes the puck to a 3rd forward waiting at the blue line and the drill now becomes a 3 on 2 until the coach ends the drill.